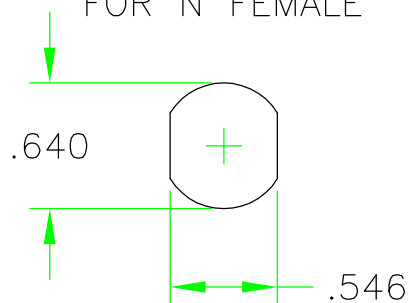



RECOMMENDED MOUNTING HOLE FOR N FEMALE



REV	ECN	DATE	BY	APPR	 <b>JFW INDUSTRIES, INC.</b> <a href="http://www.jfwindustries.com">www.jfwindustries.com</a> PH: 317-887-1340	
-	ISSUED	6-20-12	JZ	TEZ		
					MATERIAL	PROPRIETARY INFORMATION
					FINISH	ALL SURFACES ARE TO BE FREE OF BURRS, PITS, & SCRATCHES
					MODEL	TOLERANCES
					016-421-XX	.XX $\pm$ .010 .XXX $\pm$ .005 XX* $\pm$ .5'
					DESCRIPTION	DWG #
					N MALE TO N FEMALE CABLE ASSEMBLY	092-7390