

115-016

50 Ohms nominal

DC-26.5 GHz

1.25:1 maximum

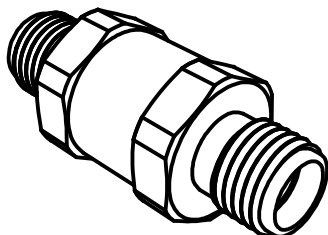
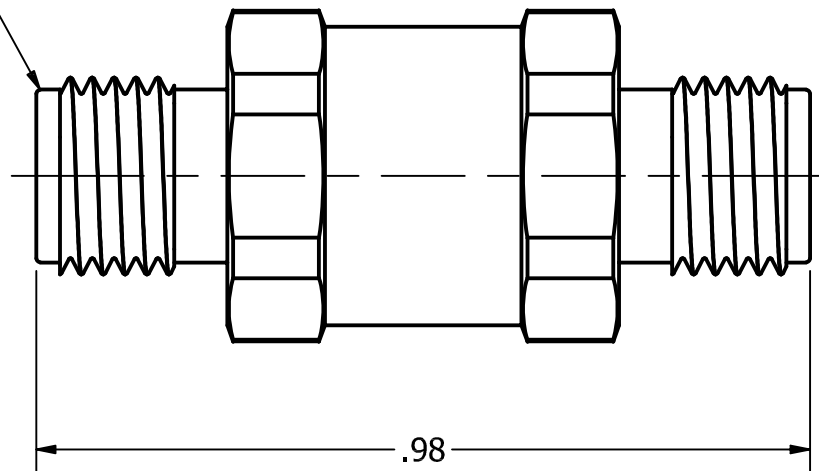
1.08:1 typical @ 12.4 GHz


1.16:1 typical @ 18 GHz

1.12:1 typical @ 26.5 GHz

Passivated Stainless Steel

Gold plated

SMA FEMALE
2-PLACES

REV	ECN	DATE	BY	APPR	<div><div><div>JFW INDUSTRIES, INC.</div><div><div>www.jfwindustries.com</div><div>PH: 317-887-1340</div></div></div></div>																		
-	ISSUED	2-7-2024	GM	JZ																			
A	33358	05-14-2024	DTS	TRS																			
					<table><tr><td>MATERIAL</td><td>STAINLESS STEEL</td><td>PROPRIETARY INFORMATION</td></tr><tr><td>FINISH</td><td>PASSIVATED</td><td>ALL SURFACES ARE TO BE FREE OF BURRS, PITS & SCRATCHES</td></tr><tr><td>MODEL</td><td>115-016</td><td><table><tr><td>SCALE</td><td>x4</td></tr><tr><td colspan="2">TOLERANCES</td></tr><tr><td>.XX±.010</td><td>.XXX±.005 XX°±.5°</td></tr></table></td></tr><tr><td>DESCRIPTION</td><td>RF ADAPTER SMA FEMALE/FEMALE</td><td>DWG # 115-016</td></tr></table>	MATERIAL	STAINLESS STEEL	PROPRIETARY INFORMATION	FINISH	PASSIVATED	ALL SURFACES ARE TO BE FREE OF BURRS, PITS & SCRATCHES	MODEL	115-016	<table><tr><td>SCALE</td><td>x4</td></tr><tr><td colspan="2">TOLERANCES</td></tr><tr><td>.XX±.010</td><td>.XXX±.005 XX°±.5°</td></tr></table>	SCALE	x4	TOLERANCES		.XX±.010	.XXX±.005 XX°±.5°	DESCRIPTION	RF ADAPTER SMA FEMALE/FEMALE	DWG # 115-016
MATERIAL	STAINLESS STEEL	PROPRIETARY INFORMATION																					
FINISH	PASSIVATED	ALL SURFACES ARE TO BE FREE OF BURRS, PITS & SCRATCHES																					
MODEL	115-016	<table><tr><td>SCALE</td><td>x4</td></tr><tr><td colspan="2">TOLERANCES</td></tr><tr><td>.XX±.010</td><td>.XXX±.005 XX°±.5°</td></tr></table>	SCALE	x4	TOLERANCES		.XX±.010	.XXX±.005 XX°±.5°															
SCALE	x4																						
TOLERANCES																							
.XX±.010	.XXX±.005 XX°±.5°																						
DESCRIPTION	RF ADAPTER SMA FEMALE/FEMALE	DWG # 115-016																					