

JFW MODEL

115-021

IMPEDANCE

50 Ohms nominal

FREQUENCY RANGE

DC-40 GHz

VSWR

1.25:1 maximum

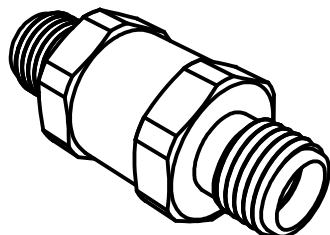
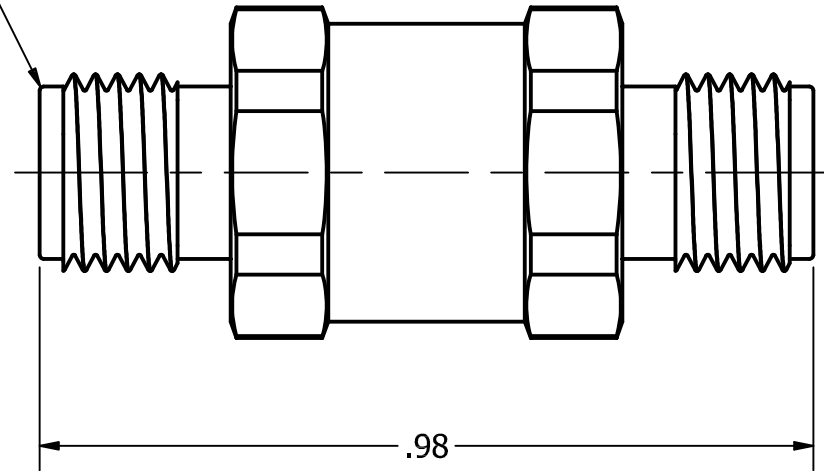
Connector Body


Passivated Stainless Steel

Connector Pins

Gold plated

2.92mm FEMALE
2-PLACES



REV	ECN	DATE	BY	APPR	 JFW INDUSTRIES, INC. www.jfwindustries.com PH: 317-887-1340		
-	ISSUED	2-7-2024	GM	JZ	MATERIAL	STAINLESS STEEL	PROPRIETARY INFORMATION
					FINISH	PASSIVATED	ALL SURFACES ARE TO BE FREE OF BURRS, PITS & SCRATCHES
					MODEL	115-021	TOLERANCES .XX±.010 .XXX±.005 XX°±.5°
					DESCRIPTION	RF ADAPTER 2.92mm FEMALE/FEMALE	DWG # 115-021
						SCALE x4	