

**JFW MODEL**

115-023

**IMPEDANCE**

50 Ohms nominal

**FREQUENCY RANGE**

DC-40 GHz

**VSWR**

1.25:1 maximum

1.15:1 typical

**Connector Body**

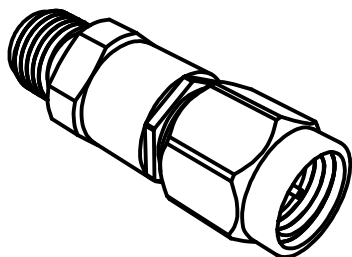
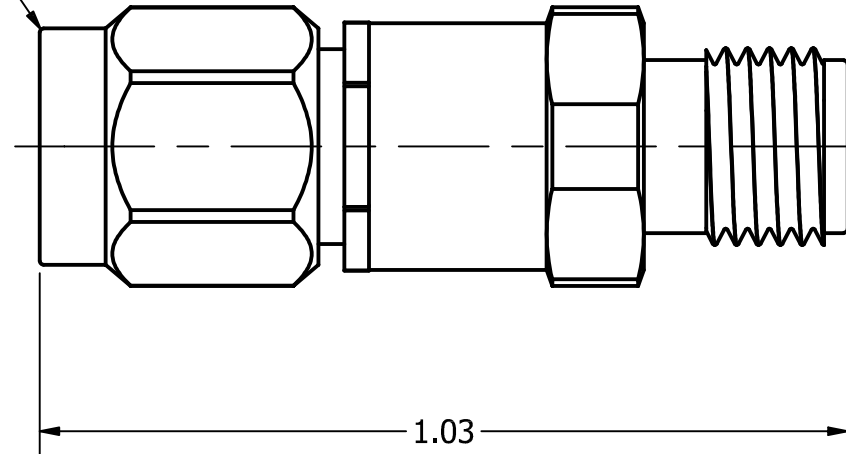
Passivated Stainless Steel


**Connector Pins**

Gold plated

2.92mm MALE

2.92mm FEMALE



REV	ECN	DATE	BY	APPR	 <b>JFW INDUSTRIES, INC.</b> <a href="http://www.jfwindustries.com">www.jfwindustries.com</a> PH: 317-887-1340		
-	ISSUED	5-6-2024	JZ	TRS	MATERIAL	STAINLESS STEEL	PROPRIETARY INFORMATION
					FINISH	PASSIVATED	ALL SURFACES ARE TO BE FREE OF BURRS, PITS & SCRATCHES
					MODEL	115-023	TOLERANCES .XX±.010 .XXX±.005 XX°±.5°
					DESCRIPTION	RF ADAPTER 2.92mm MALE/FEMALE	DWG # <b>115-023</b>
						SCALE x4	