

JFW MODEL

115-1100

IMPEDANCE

50 Ohms nominal

FREQUENCY RANGE

DC-18 GHz

VSWR

1.25:1 maximum

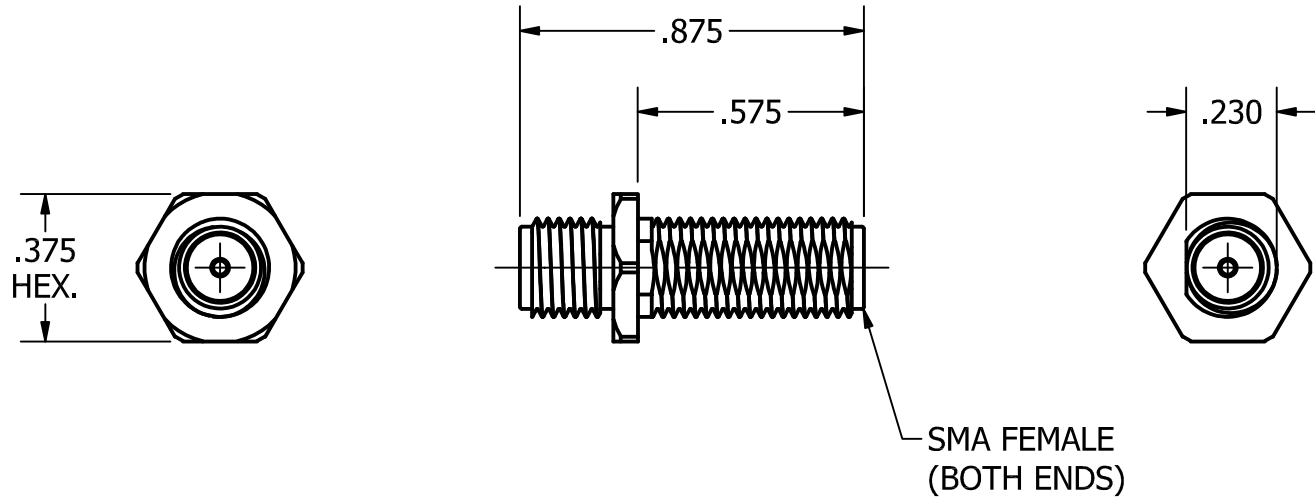
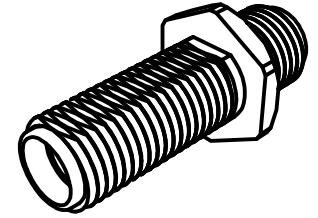
1 GHz 1.009:1 typical

3 GHz 1.016:1 typical

6 GHz 1.045:1 typical

12 GHz 1.065:1 typical

18 GHz 1.057:1 typical



Connector Body

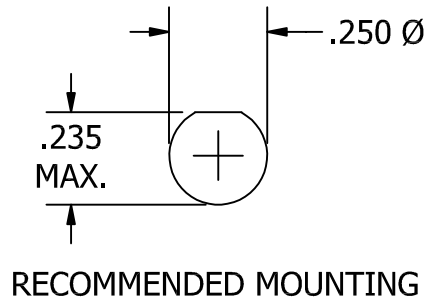
Passivated SS


Connector Pins

Gold plated BeCu

SMA FEMALE
(BOTH ENDS)

NOTE: THIS PART IS SUPPLIED WITH A HEX NUT & WASHER (.250 MAX. PANEL THICKNESS)



REV	ECN	DATE	BY	APPR	 JFW INDUSTRIES, INC. www.jfwindustries.com PH: 317-887-1340		
-	ISSUED	9-25-2023	JZ	TRS	MATERIAL	STAINLESS STEEL	PROPRIETARY INFORMATION
					FINISH	PASSIVATED	ALL SURFACES ARE TO BE FREE OF BURRS, PITS & SCRATCHES
					MODEL	115-1100	TOLERANCES .XX±.010 .XXX±.005 XX°±.5°
					DESCRIPTION	SMA FEMALE/FEMALE BULKHEAD MOUNT RF ADAPTER	DWG # 115-1100
						SCALE x2	