

JFW MODEL

115-775

IMPEDANCE

50 Ohms nominal

FREQUENCY RANGE

DC-18 GHz

VSWR

1.15:1 maximum

1.04:1 typical at 6 GHz

1.08:1 typical at 18 GHz

Connector Body

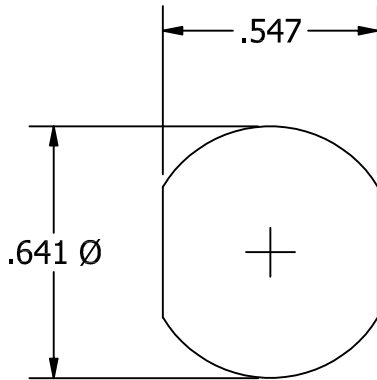
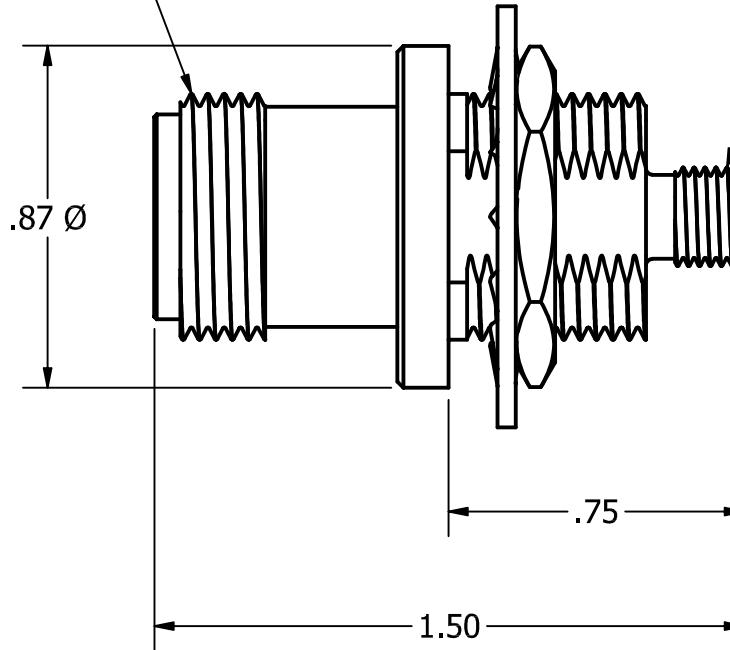
Passivated Stainless Steel

Connector Pins


Gold plated

N FEMALE

SMA FEMALE



RECOMMENDED MOUNTING

REV	ECN	DATE	BY	APPR	 JFW INDUSTRIES, INC. www.jfwindustries.com PH: 317-887-1340		
-	ISSUED	4-25-204	JZ	TRS	MATERIAL	STAINLESS STEEL	PROPRIETARY INFORMATION
					FINISH	PASSIVATED	ALL SURFACES ARE TO BE FREE OF BURRS, PITS & SCRATCHES
					MODEL	115-775	TOLERANCES .XX±.010 .XXX±.005 XX°±.5°
					DESCRIPTION	RF ADAPTER BULKHEAD N FEMALE / SMA FEMALE	DWG # 115-775
						SCALE x2	